

Darling Point Sailing Squadron 2011-12 Sailing Season



SAILING INSTRUCTIONS

1. RULES

- 1.1 Racing will be governed by the rules as defined in *The Racing Rules of Sailing*.
- 1.2 The Prescriptions and Special Regulations of Yachting Australia Inc will apply.
- 1.3 Individual class rules apply with the following exceptions: 13ft Skiff Class Rules 12.2, 12.3 & 12.4 regarding age limits do not apply.

2. NOTICES TO COMPETITORS

Notices to competitors will be posted on the official club notice board.

3. CHANGES TO SAILING INSTRUCTIONS

Any change to the sailing instructions will be posted at least 1 hour before the start time of the race for which it will take effect.

4. SIGNALS MADE ASHORE

- 4.1 Signals made ashore will be displayed on the flagpole located on the western side of the main boat ramp.
- 4.2 When flag AP is displayed ashore with (2) sound signals, '1 minute' is replaced with 'not less than 60 minutes' in the race signal AP. All competitors are to remain ashore until the AP is lowered followed by (1) sound signal.

5. SCHEDULE OF RACES

- 5.1 Races are generally held most Sunday afternoons at approximately 2pm between September and April. Refer to the season calendar for more information.

6. CLASS FLAGS

Class	Flag
16ft Skiff	Orange flag with black numerals "16"
13ft Skiff	White flag with black numerals "13"
Cherub	White flag with red heart
125's / Intermediate	White flag with black circle & white pennants
Junior	White Flag with black single or double sabot
All Boats	Yellow flag with black A

7. RACING AREAS

Racing will take place on Waterloo Bay. See Appendix B.

Darling Point Sailing Squadron

2011-12 Sailing Season

8. THE COURSES

- 8.1 Course "A" being the longer course for skiff classes consists of a windward / leeward format starting and finishing to windward. The number of laps varies between classes and will be specified at the briefing prior to each race. Refer appendix A.
- 8.2 Course "B" being the shorter course for junior and intermediate classes consists of triangular and windward / leeward format starting and finishing to windward. The number of laps varies between classes and will be specified at the briefing prior to each race. Refer appendix A.
- 8.3 Short course races will be described at a briefing when such a races are scheduled.

9. MARKS

Usually, rounding marks for all classes will be yellow inflatable cylindrical buoys with a pink tear drop inflatable buoy for the finish mark. The starting mark will be a yellow inflatable cylindrical buoy. This may vary from time to time so please attend the briefing prior to each race.

10. THE START

- 10.1 **Scratch Starts:** The starting procedure shall be as per rule 26 of the racing rules of sailing. Starting order of classes will be specified at the briefing prior to the race. (Exceptions, eg Short course starting will be described at the briefing when applicable)
- 10.2 **Handicap Starts:** A countdown, in minutes, eg: 30,29, ...to Scr. will be displayed on the start vessel. A boat should **start when the board displaying its handicap time (minutes) is LOWERED**
- 10.3 The starting line will be between the staff displaying the starting flag on the Race Committee Vessel and the starting buoy. If a clearance buoy is laid off the Race Committee Vessel then the buoy together with its mooring line shall be considered as part of the Committee Vessel.
- 10.3 Boats whose warning signal has not been made should avoid the starting area during the starting sequence for other classes.
- 10.4 A boat starting later than 10 minutes after her starting signal will be scored Did Not Start without a hearing. This changes rule A4.
- 10.5 Recalls shall be as per RRS 29 with the following addition. In the event of an individual recall the starter or his assistant shall where possible broadcast to the committee support boats as soon as practical after the start the names of the offending boat/s. If the offending boat/s is/are not attempting to restart then a support boat shall make a reasonable attempt to verbally advise the offender/s that they broke the start.

11. THE FINISH

- 11.1 The finishing line will be between the flag staff on the Race Committee Vessel and the pink teardrop buoy.

Darling Point Sailing Squadron 2011-12 Sailing Season

12. PENALTY SYSTEM

- 12.1 For all classes rule 44 applies except in the event of a short course race where rules 44.1 and 44.2 are changed so that only one turn, including one tack and one gybe, is required.

13. TIME LIMITS AND TIME TARGETS

- 13.1 If no boat finishes the course or the shortened course within 2-1/2 hours, the race committee shall abandon the race. If one boat finishes within the time limit, then all boats that finish are entitled to be scored according to their finishing places unless the race is abandoned. (ISAF Rule 35)
- 13.2 At least one lap must be completed within the 2-1/2 hour limit to count as a race.
- 13.3 Target time for all classes is approx 90 minutes.
- 13.4 Time limits and targets will reduce for any short course races.

14. PROTESTS

- 14.1 Protest forms are available at the race office. Protests shall be delivered within the protest time limit. A lodgement fee of \$10.00 will apply.
- 14.2 For each class, the protest time limit is 60 minutes after the last boat has finished the last race of the day.
- 14.3 Notices will be posted within 30 minutes of the protest time limit to inform competitors of hearings in which they are parties or named as witnesses.

15. SAFETY REGULATIONS

- 15.1 Personal flotation devices shall be worn at all times whilst afloat. Such devices shall be in good condition and in accordance with ISAF Rule 1.2.
- 15.2 At all times competitors must obey the direction from all safety craft on water.
- 15.3 A boat that will not take part or retires from a race shall notify the Race Committee on the water or the Ramp Marshall upon return to shore as soon as possible.
- 15.4 Competitors must sign on before leaving shore and sign off immediately upon return.
- 15.5 The International Regulations for Preventing Collisions at Sea also apply at times. . Particular attention is drawn to Rule 9 'Narrow Channels' of these Regulations.

Remember:

All vessels must travel at a safe speed at all times.

When altering course make your intentions clear to others as early as possible

A vessel proceeding along the course of a narrow channel or fairway shall keep as far to her right (starboard) side as is safe and practicable.

A vessel of less than 20 meters in length or a sailing vessel shall not impede the passage of a vessel which can safely navigate only within a narrow channel or fairway.

16. EQUIPMENT AND MEASUREMENT CHECKS

- 16.1 A boat or equipment may be inspected at any time for compliance with safety or class rules or the sailing instructions.
- 16.2 Any boat deemed un-seaworthy or non-compliant with their class rules by the race committee, will not be allowed to compete until the defects are rectified or necessary changes made.

Darling Point Sailing Squadron 2011-12 Sailing Season

17. SUPPORT BOATS

In the interest of safety of all competitors, only boats that have been authorised by the Racing Committee will be allowed onto the course proper for coaching purposes. Any person wishing to do so should approach the race committee in the first instance.

18. RADIO COMMUNICATION

A boat, while racing, shall neither make radio transmissions nor receive radio communications not available to all boats. This restriction also applies to mobile telephones.

19. DISCLAIMER OF LIABILITY

All those taking part in the sailing races and / or training at the Darling Point Sailing Squadron Inc. do so at their own risk. **Attention is drawn to ISAF Fundamental Rule 4 Decision to Race:- The responsibility for a boat's decision to participate in a race or to continue *racing* is hers alone.**

Darling Point Sailing Squadron Inc. and all others involved in the conduct and management of this event, shall not be liable for any loss of life or injury, or for the loss of property or damage thereto, whatsoever or howsoever occurring. The race documents and instructions in no way limit or reduce the complete and unlimited responsibilities of a competitor for the management and care of a boat that they use. **Attention is also drawn to ISAF Fundamental Rule 1.**

20. INSURANCE

Each participating boat shall be insured with valid third-party liability insurance with a minimum cover of \$5 million AUD

Darling Point Sailing Squadron 2011-12 Sailing Season

APPENDIX A – COURSES

Course A3

Start – 4 – 1 – 4 – 1 – 4 – 1 – Finish

Course A4

Start – 4 – 1 – 4 – 1 – 4 – 1 – 4 – 1 – Finish

Course A5

Start – 4 – 1 – 4 – 1 – 4 – 1 – 4 – 1 – 4 – 1 – Finish

Course A6

Start – 4 – 1 – 4 – 1 – 4 – 1 – 4 – 1 – 4 – 1 – 4 – 1 – Finish

Course B2

Start – 2 – 3 – 1 – 2 – 1 – Finish

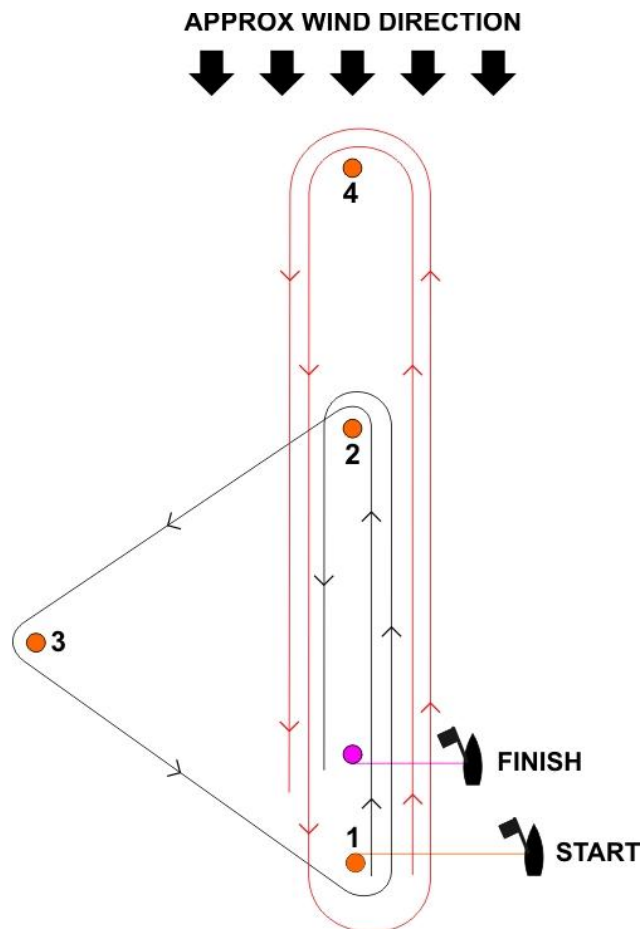
Course B3

Start – 2 – 3 – 1 – 2 – 1 – 2 – 3 – 1 – Finish

Course B4

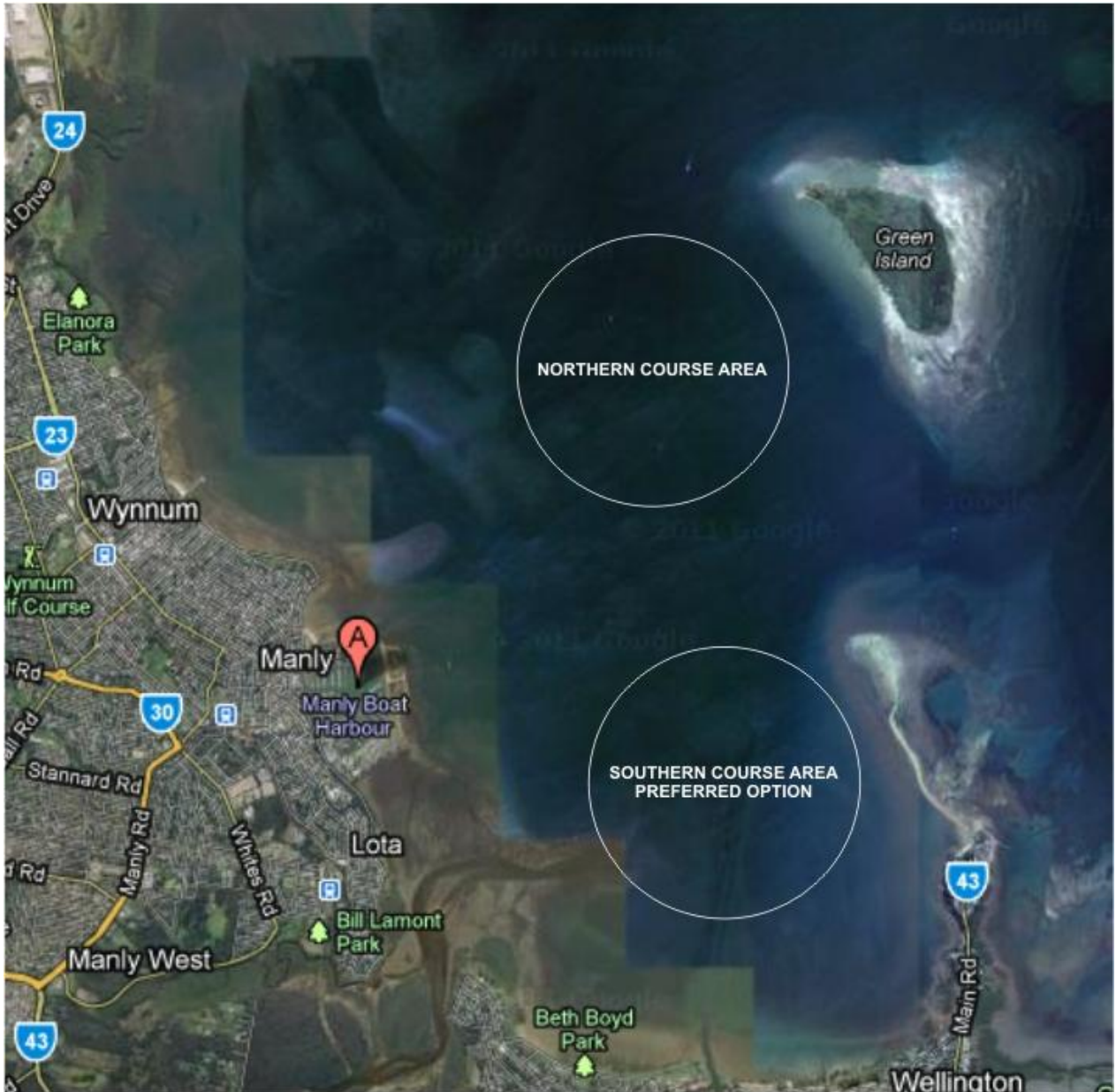
Start – 2 – 3 – 1 – 2 – 1 – 2 – 3 – 1 – 2 – 1 – Finish

Note: Red Flag: *All rounding marks to Port*
Green Flag: *All rounding marks to Starboard*



Darling Point Sailing Squadron 2011-12 Sailing Season

APPENDIX B – COURSE AREAS



Darling Point Sailing Squadron 2011-12 Sailing Season



SAILING POLICY

1 COMPETITORS RESPONSIBILITIES

- 1.1 Following participation in any three (3) Darling Point Sailing Squadron (DPSS) races other than invitation races, any skipper or crew of a participating boat is required to become a member of DPSS.
- 1.2 It is the responsibility of the owner/skipper to ensure that all persons competing on the boat holds a current membership of YA.
- 1.3 Boats may be rostered for volunteer duty throughout the season. On each of the days specified the nominated boat will provide one or more volunteer.
- 1.4 All participants intending to race shall pre-pay and register with a Season Entry or Individual Race Entry prior to racing. Failure to pay the outlined fee and/or register will result in positions not being recorded. Participants who continue to race without paying or registering may be disciplined by Management Committee.

2. REPLACEMENT OF EQUIPMENT OR CREW

- 2.1 The replacement of equipment throughout the season is allowed excluding the actual boat hull which may not be replaced.
- 2.2 The replacement of crew throughout the season is allowed providing the replacement crew is a club member in accordance with point 1.4 of this policy. The replacement of a skipper may be allowed if the request is submitted to the committee in writing for their deliberation. The replacement skipper if approved must be a member of DPSS.

3 RACE ABANDONMENT

- 3.1 Racing will not be started if there is a current Gale Wind, Tsunami or other severe weather warning for the race area.
- 3.2 For regular Sunday racing the decision to race, postpone or abandon will not be made before 1100 hours on the day of the race unless circumstances indicate that an earlier decision would be appropriate and if that is the case a notice will be placed on the DPSS website the night before.
- 3.3 A decision to race on any given day does not relieve any competitor of his/her obligation under RRS Fundamental Rule 4.

Darling Point Sailing Squadron

2011-12 Sailing Season

4. SCORING - SEASON POINTS

- 4.1 The Low Points Scoring System will apply for both scratch and handicap placings.
- 4.2 The minimum number of boats required to constitute a class eligible to contest for the Club Championship shall be as decided by all members at a General Meeting. Moreover, if after 2 calendar months from the commencement of the season there are insufficient boat numbers to constitute a class, such boats shall sail with the All Boats Class. Formal applications from a class sailing in the All Boats fleet requesting recognition as a class in its' own right, may be presented to the Race Committee for consideration; however, such application does not imply that such recognition will be granted.
- 4.3 The Club Championship shall consist of 7 races during the season as specified in the sailing calendar. A boat's best 6 races shall count (i.e. 1 discard is allowed). In the event a championship race is cancelled and unable to be re-sailed then the championship shall be decided over 6 races with 5 to count. A minimum of 5 races is required to constitute the Club Championship of which all 5 shall count.
- 4.4 The Aggregate Points Championship shall consist of aggregate points based on Handicap Results for all official points races during the season.
- 4.5 In order for a boat to accumulate Club & Handicap Championship Points the skipper and crew must be current members of DPSS.
- 4.6 Handicaps will be set by the race committee for classes only and will be adjusted using the 3, 2, 1 minute penalty method (for 1st to 3rd on handicap) after each race. Boats that do not start in any scheduled points races will incur a 1 minute penalty for every two races in which they do not start) as well as any other adjustment based on the results of that race.
- 4.7 For all classes accumulated points for both club championship and handicap championship will always remain with the boat and are not transferable for any reason.