



## Sabre Queensland State Titles 2024

17-18 February 2024

Darling Point Sailing Squadron (the Organising Authority)

And

Sabre Sailing Association Queensland

# Sailing Instructions

## 1. RULES

- 1.1 The regatta will be governed by the rules as defined in *The Racing Rules of Sailing* (<https://cdn.revolutionise.com.au/site/hrya1mz0ijmfcshb.pdf>).
- 1.2 Australia Sailing Special Regulations addendum A Part 2 (off the beach boats) will apply (<https://cdn.revolutionise.com.au/site/xa1nwvde4pplvtmv.pdf>).
- 1.3 The Sabre Class Rules of Measurement and Construction will apply.
- 1.4 Where there is a conflict between rules in the Notice of Race and the Sailing Instructions the Sailing Instruction rules shall apply.
- 1.5 Outside assistance: ALTERATION TO RACING RULES The racing rules of sailing (RRS) will be modified in accordance with RRS 86 as follows:  
RRS 41, Outside Help, will be replaced by:

“A boat may receive outside help as provided for in RRS 1.1 and, in addition, where the Organising Authority (OA) deems that the vessel and its crew require assistance in order to right a capsized vessel and/or return its crew to the vessel in order to continue racing.”



## **2. CODE OF CONDUCT**

- 2.1 Competitors and support persons shall comply with reasonable requests from race officials.
- 2.2 Competitors, race officials and support persons shall comply with the club's Code of Conduct policy whilst on and off the water.

## **3. COMMUNICATIONS WITH COMPETITORS**

- 3.1 Notices to competitors will be posted on the official event noticeboard on the club website at [https://www.dpss.org.au/nationals\\_states/sabre-states-2024/](https://www.dpss.org.au/nationals_states/sabre-states-2024/).

## **4. SIGNALS MADE ASHORE**

- 4.1 Signals made ashore will be displayed on the flagpole located on the western side of the main boat ramp.
- 4.2 When flag AP is displayed ashore with (2) sound signals, '1 minute' is replaced with 'not less than 30 minutes' in the race signal AP. All competitors are to remain ashore until the AP is lowered followed by (1) sound signal.

## **5. SCHEDULE**

- 5.1 Registration will occur from 09:00hrs on 17 February at Registration Desk in the DPSS club house.
- 5.2 A briefing will be held at 12:00hrs on 17 February.



### 5.3 Races.

Date	Event	Time
17 February 2024	Sailing Session 3 races	Warning signal not before 13:00 hrs
18 February 2024	Sailing Session 3 races	Warning signal not before 12:00 hrs

5.4 No warning signal will be made after 15:30 on each day of racing.

5.5 DPSS Club racing will commence at 13:30 on Sunday 18 February. The final two races of the series will be sailed as a separate division on the same course.

## 6. CLASS FLAG

6.1 The Class flag will be white with a red Sabre emblem.

## 7. RACING AREAS

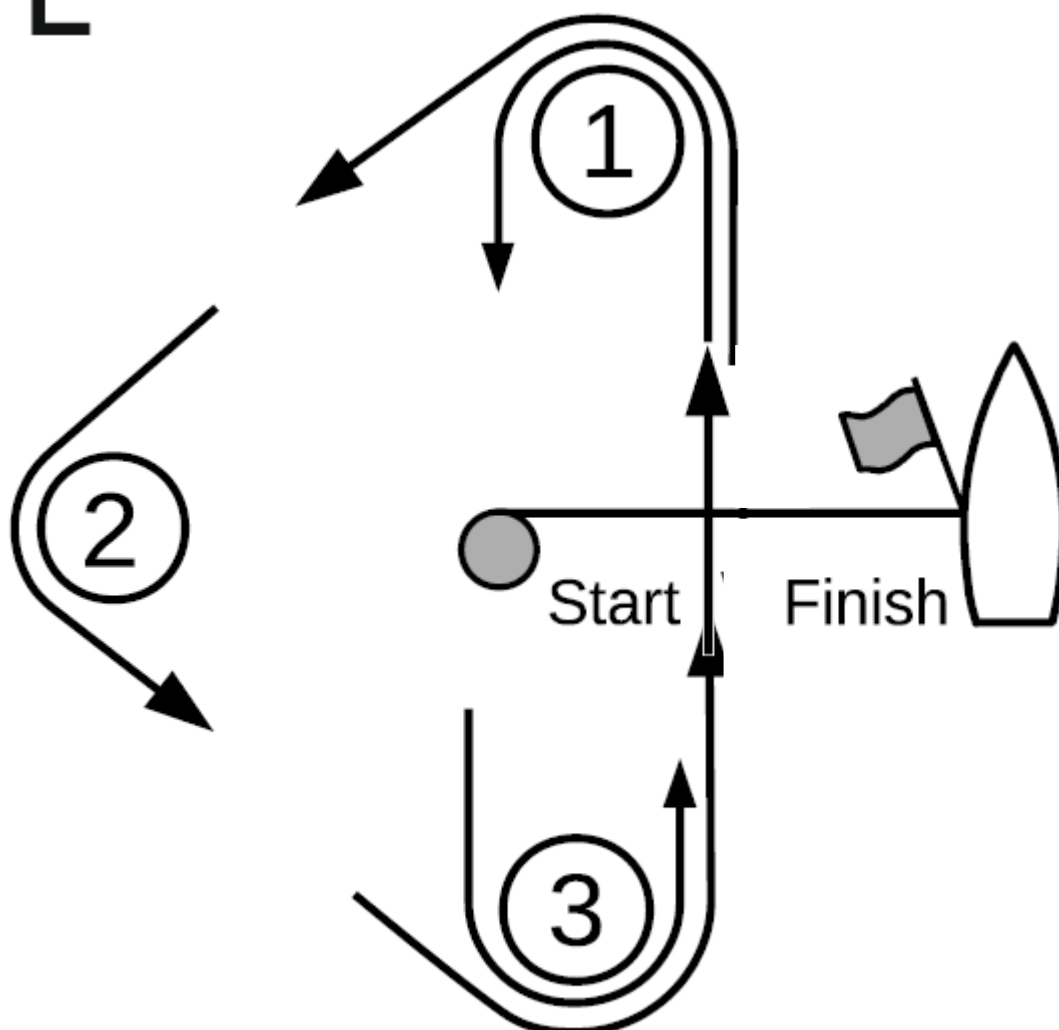
7.1 **SI Addendum A** shows the approximate location of racing areas on Waterloo Bay.

## 8. COURSES

8.1 The courses will be equilateral triangles. Start – 1 – 2 – 3 – 1 – 3 – 1 – 2 – 3 – Finish.



IL



## 9. MARKS

- 9.1 Marks 1, 2, 3 will be yellow cylindrical buoys.
- 9.2 The starting and finishing mark will be Black and White checked inflatable buoy.



## **10. THE START**

- 10.1 Races will be started using rule 26.
- 10.2 The starting line is between the staff displaying the orange on-station flag on the Race Committee Vessel and the starting buoy. If a clearance buoy is laid off the Race Committee Vessel, then the buoy together with its mooring line shall be considered as part of the Committee Vessel.
- 10.3 A boat starting later than 10 minutes after her starting signal may be scored Did Not Start (DNS) without a hearing. This changes rule RRS A5.1 and A5.2.

## **11. THE FINISH**

- 11.1 The finishing line will be between the blue flag on the Race Committee Vessel and the finish buoy.

## **12. TIME LIMITS AND TIME TARGETS**

- 12.1 Target time will be 35 minutes with a 10 minute finishing window.

## **13. HEARING REQUESTS**

- 13.1 The protest time limit is 45 minutes after the last boat finishes the last race of the day or the race committee signals no more racing today, whichever is later. The time will be posted on the official notice board.
- 13.2 Hearing request forms are available at the Secretary's office. Protests shall be delivered to the office within the protest time limit.
- 13.3 Notices will be posted no later than 30 minutes after the protest time limit to inform competitors of hearings in which they are parties or named as witnesses. Hearings will be held upstairs in the clubhouse.

## **14. SCORING**

- 14.1 The Low Points Scoring System specified in Appendix A will apply as modified below.
- 14.2 The regatta will consist of up to six (6) races of which three (3) races are required to be completed to constitute a series.



- 14.3 Where five (5) or more races are completed, a boat's series score shall be the total of her race scores excluding her worst score.

## 15. SAFETY REGULATIONS

- 15.1 **Sign-on and Sign-off:** All skippers intending to start shall sign their name on the Sign-on/off sheet provided in the 'Sign-on' area on the verandah of the club at least 30 minutes before the first warning signal of each race session. All competitors shall sign their name on the Sign-on/off sheet within 30 minutes of the last boat racing reaching shore. Failure to sign on or off may result in the race committee disqualifying that boat.
- 15.2 A boat that does not take part or retires from a race shall notify the Race Committee on the water or the Radio Operator/Ramp Marshall upon return to shore as soon as possible.
- 15.3 At all times competitors must obey the direction from DPSS race officials on water.
- 15.4 The International Regulations for Preventing Collisions at Sea also apply at all times. Particular attention is drawn to Rule 9 'Narrow Channels' of these Regulations.

### **Remember when manoeuvring in Manly Harbour and the channel:**

All vessels must travel at a safe speed at all times.

When altering course make your intentions clear to others as early as possible.

A vessel proceeding along the course of a narrow channel or fairway shall keep as far to her right (starboard) side as is safe and practicable.

A vessel of less than 20 metres in length or a sailing vessel shall not impede the passage of a vessel which can safely navigate only within a narrow channel or fairway.

## 16. REPLACEMENT OF CREW OR EQUIPMENT

- 16.1 Substitution of skipper or crew will not be allowed without prior written approval of the Race Committee prior to briefing.



- 16.2 Substitution of damaged or lost equipment will be allowed. Change of sail number must be provided to the Race Committee in writing prior to signing on.

## **17. EQUIPMENT AND MEASUREMENT CHECKS**

- 17.1 A boat or equipment may be inspected at any time for compliance with safety or class rules, notice of race and sailing instructions.
- 17.2 Any boat deemed un-seaworthy or non-compliant with their class rules by the race committee, may not be allowed to compete until the defects are rectified or necessary changes made.

## **18. SUPPORT BOATS**

- 18.1 In the interest of safety of all competitors, only boats that have been authorised by the Racing Committee will be allowed onto the course proper for coaching purposes. Any person wishing to do so should approach the race committee in the first instance.
- 18.2 Support vessels are identified with a club burgee flown from an upright within the vessel.

## **19. ELECTRONIC COMMUNICATION**

- 19.1 Except in an emergency, a boat shall neither make nor receive electronic communications. This restriction also applies to mobile telephones.

## **20. PRIZES**

- 20.1 Scratch and Handicap Prizes will be given at the discretion of the organising committee and SSAQ.
- 20.2 The Dick Wilkins Trophy will be awarded to person deemed to have shown “The spirit of the sport”.

## **21. RISK STATEMENT**

- 21.1 RRS 3 states: ‘The responsibility for a boat’s decision to participate in a race or to continue to race is hers alone.’ By participating in this event each competitor agrees and acknowledges that sailing is a potentially dangerous activity with



inherent risks. These risks include strong winds and rough seas, sudden changes in weather, failure of equipment, boat handling errors, poor seamanship by other boats, loss of balance on an unstable platform and fatigue resulting in increased risk of injury. **Inherent in the sport of sailing is the risk of permanent, catastrophic injury or death by drowning, trauma, hypothermia or other causes.**

## **22. INSURANCE**

22.1 Each participating boat shall be insured with valid third-party liability insurance with a minimum cover of \$5 million AUD per incident or the equivalent.





## SI ADDENDUM A – APPROXIMATE RACING AREA

